

COMPREHENSIVE PLAN 2023:

A STUDENT-CENTERED REVIEW OF CMS PROGRAMS, BOUNDARIES, AND FACILITIES

UPDATES & SUPERINTENDENT'S RECOMMENDATIONS ON INITIAL DECISIONS FOR 2023-2024

PRESENTED TO THE CHARLOTTE-MECKLENBURG BOARD OF EDUCATION | AUGUST 23, 2022



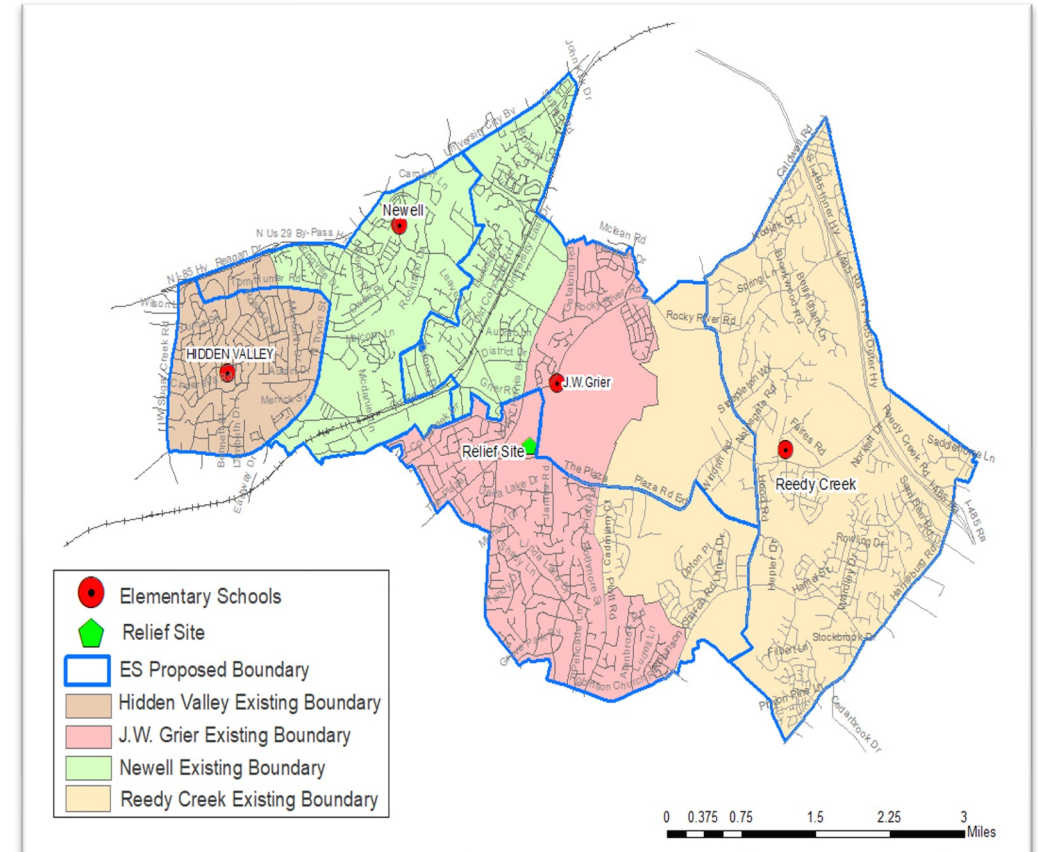
HIDDEN VALLEY/JOSEPH W. GRIER/NEWELL/REEDY CREEK
RELIEF ELEMENTARY

RECOMMENDATION: BLUE SCENARIO

- **Assigned to Newell:** The northern part of Hidden Valley (North of Tom Hunter Road)
- **Assigned to Grier:** The northeastern section of Newell (Knollwood + an additional section north of Old Concord) and northwestern section of Reedy Creek (along west of Hood Rd and N of Plaza Rd Ext)
- **Assigned to Relief:** The southern section of Grier (along Grier Road, and Plaza Rd Ext. The southwestern section of Reedy Creek; south of Plaza Rd Ext (E-W bound), west of Hood Rd (N-S bound), and east of Plott Road (N-S bound), north of Robinson Church Road (E-W bound)

School	Estimated enrollment at opening	Opening Projected planning capacity	Opening projected staff building utilization
Hidden Valley*	686	88%	115%
J.W. Grier*	553	79%	103%
Newell	553	71%	77%
Reedy Creek*	760	95%	115%
New Relief ES	628	70%	99%

*Including Pre-K. Room for Pre-K and EC at the relief school.





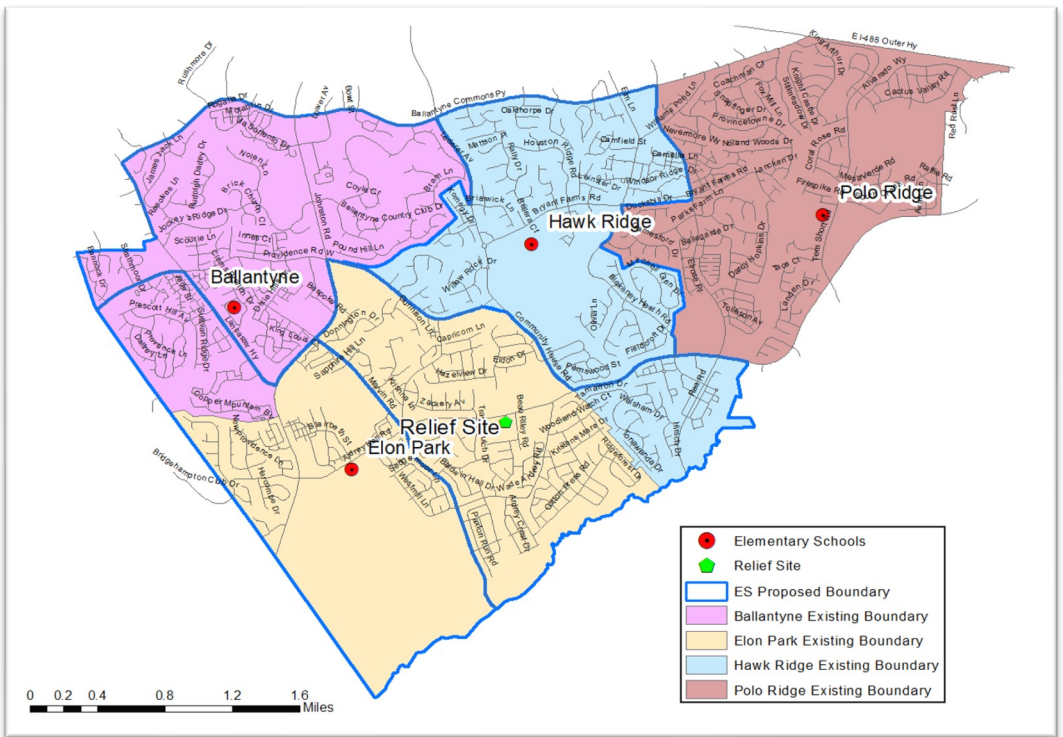
ELON PARK/HAWK RIDGE/BALLANTYNE
RELIEF ELEMENTARY

RECOMMENDATION: BLUE SCENARIO

- Assigned from Ballantyne to Elon Park:** IMT Ballantyne Apartments, Legacy Apartments, Cooper Ridge Condos, Riviera Condos, Providence Pointe, Maplecrest (along Providence Road West and along Lancaster Hwy)
- Assigned to the relief school:** The eastern section of Elon (along east of Marvin Rd) and the southern section of Hawk Ridge (along Ardrey Kell Rd)

School	Estimated enrollment at opening	Opening Projected planning capacity	Opening projected staff building utilization
Ballantyne	582	75%	84%
Elon Park	625	80%	92%
Hawk Ridge*	502	74%	72%
New Relief ES	654	73%	85%

*Including Pre-K. Room for Pre-K and EC at the relief school.



A modern elementary school building with a prominent cantilevered upper section in shades of orange and red. The main building is constructed of brick and tan panels. The entrance features large glass doors supported by two angled metal columns. The foreground shows a paved walkway with bike racks and a grassy area. The sky is bright blue with light clouds.

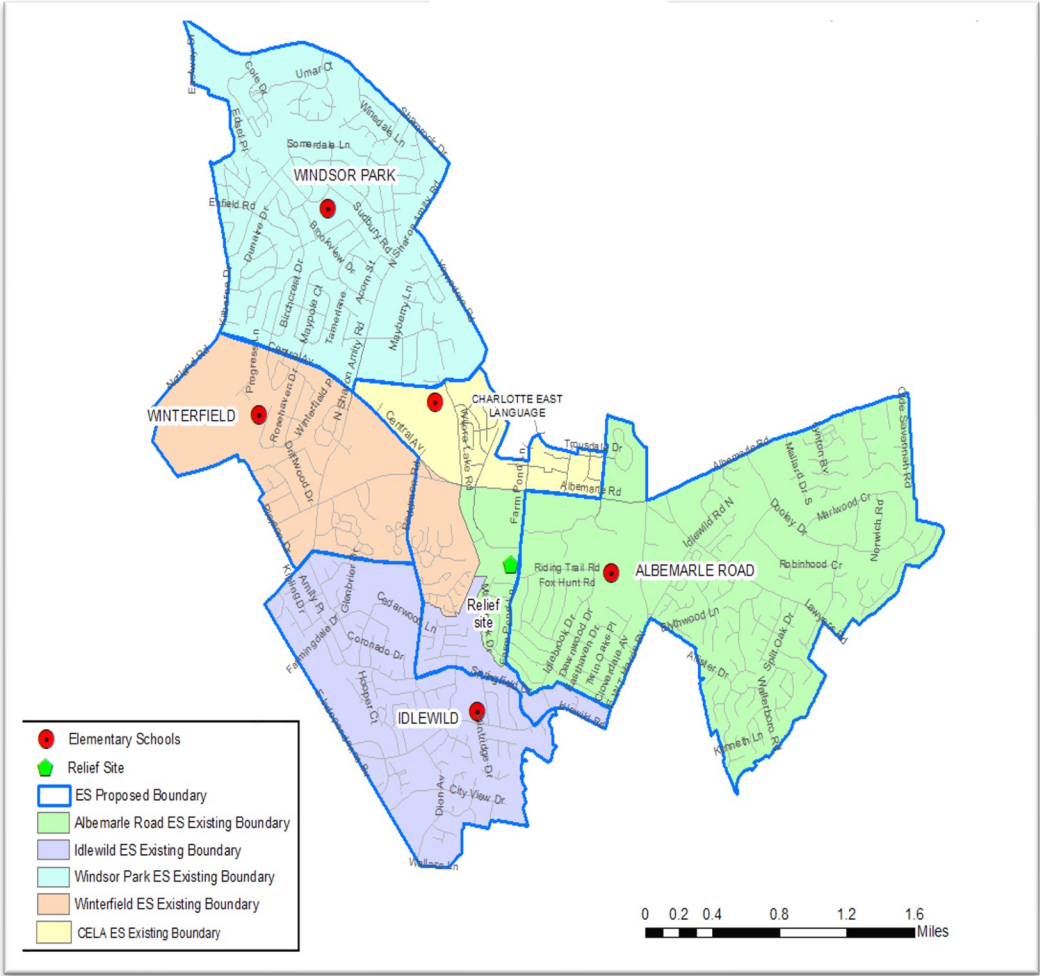
WINDSOR PARK/WINTERFIELD/IDLEWILD/ALBEMARLE ROAD
RELIEF ELEMENTARY

RECOMMENDATION: BLUE SCENARIO

Assigned to the relief school:

- The eastern section of Winterfield, East of Reddman Road
- From Idlewild, East of Reddman Road and north of Springfield Drive
- From Albemarle Road elementary, the small section of West Farm Pond Ln
- From Charlotte East Language Academy, all non-magnet students
- No changes to the Windsor Park boundary

School	Estimated enrollment at opening	Opening Projected planning capacity	Opening projected staff building utilization
Windsor Park*	510	73%	100%
Winterfield*	449	66%	89%
Idlewild*	851	109%	150%
Albemarle Road	724	86%	103%
CELA	TBA		
New Relief ES	587	65%	93%



*Includes Pre-K. Additional relief will be gained at Idlewild by relocation of some classrooms to the relief school

PROGRAMMATIC CHANGES 2023 – 2024

Related to Windsor Park/Winterfield/Idlewild/Albemarle Road relief ES

- Charlotte East Language Academy (CELA) becomes a full K-8 Spanish Language Immersion school to ensure consistency with Collinswood and Oaklawn, and to create additional capacity in the magnet school

PROGRAMMATIC CHANGES 2023 – 2024

RECOMMENDATION:

- **Immediately relocate** Performance Learning Center (PLC) and the CMS Virtual programs to E.E. Waddell; immediately relocate Turning Point from leased space to the space previously occupied by PLC at Derita
- **Proceed with opening** the PACE Academy in 2023-24
- **Continue to explore programmatic options** through the development of the Comprehensive Plan, and in consideration of the decisions on boundaries and programs that will be made around the new south Charlotte relief high school opening

SUPERINTENDENT'S RECOMMENDATIONS 2023 – 2024

- **Adopt the “Blue Scenario” at each of the three relief elementary schools:**
 - Hidden Valley/Joseph W. Grier/Newell/Reedy Creek Relief Elementary
 - Elon Park/Hawk Ridge/Ballantyne Relief Elementary
 - Windsor Park/Winterfield/Idlewild/Albemarle Road Relief Elementary
- **Endorse the programmatic changes as outlined at:**
 - Charlotte East Language Academy
 - E.E. Waddell
 - Lincoln Heights
 - Derita